

#No.1 LMS Application in India  
#Trusted by 1000+ Institutions



# WITS CLASS

A Complete Education Solution for schools & colleges



Celebrating **10**  
Years



# WHO WE ARE

Witsclass is a comprehensive Learning Management System (LMS) and Education Technology platform designed to empower educational institutions, training centers, academies, coaching institutes, corporate organizations and skill development providers with a complete digital learning ecosystem.

We provide a centralized platform for managing online and offline learning activities, including course delivery, live classes, examinations, attendance, student performance tracking, certifications, communication, fee management and administrative operations. Our solution helps institutions streamline academic processes, enhance learner engagement and improve operational efficiency through advanced automation and real-time analytics.

With customizable modules, mobile-friendly access, third-party integrations and scalable infrastructure, Witsclass enables organizations to deliver seamless learning experiences while maintaining complete control over their educational and business operations.



# — WHY WITSCCLASS? —



**Student, Teacher & Parent Portals**



**Live Classes & Own live system**



**Online Examinations & Assessments**



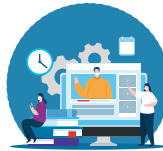
**Performance Analytics & Reports**



**ERP & Administrative Management**



**Custom Development & Integrations**



**End-to-End Learning Management Platform**



**Mobile App & Multi-Device Access**



**Secure Cloud Infrastructure**



**Dedicated Support & Training**



**Witsclass – Empowering Learning, Simplifying Management, Driving Success.**



# BASIC

## STUDENT ADMISSION



Allows to easily collect and manage student information like your name, academic level and mobile number. It encompasses various components, in backend (administrative sides, to facilitate a seamless and efficient admission process.

## STUDENT PROFILE



This Module in an LMS helps institutions maintain complete digital records of students in a centralized and secure system. It enables easy access to academic, personal and performance-related information while improving communication and administration efficiency.

## ATTENDANCE MANAGEMENT



The attendance of a student can be calculated and managed by looking at the login information, class attendance, watch history and exams taken.

## FEE MANAGEMENT



The fee management module handles billing, payments and records, streamlining financial transactions, tracking fees and generating financial reports efficiently.

## MARK SHEET & PROGRESS REPORT



It helps digitally manage student academic performance, examination records, grades and progress tracking in an organized and automated manner. It enables teachers, students, parents and administrators to access real-time academic insights and performance analytics.

## LANDING PAGE WEBSITE



For an LMS platform is a professionally designed website that helps schools, colleges, training centres and students discover your platform. It showcases key features, builds trust and converts visitors into customers through a modern, user-friendly experience.



# STANDARD

## TEACHER LOGIN



This module provides secure access for faculty members to manage their academic responsibilities, conduct classes, evaluate students and interact with learners in a structured digital environment.

## PARENT LOGIN



The purpose of a parent's login for an LMS is to give them instant access to their child's assignments, grades and other pertinent data. This platform lets parents stay involved in their child's education

## REPORT CARD GENERATION



Schools need report cards that strictly comply with board patterns (like CBSE, ICSE, or state boards) featuring continuous evaluation, co-scholastic grading, and term-wise splits.

## RECORDED CLASSROOM



Allows institutions to provide flexible, anytime-access learning by storing and organizing video-based lessons. It enables students to revisit lectures, revise topics and learn at their own pace while giving teachers a structured way to upload and manage educational content.

## ONLINE EXAMINATION



Enables institutions to conduct secure, scalable and fully digital assessments for students. It replaces traditional paper-based exams with automated, real-time evaluation systems that improve efficiency, accuracy, and transparency.

## HOME WORK ASSIGNMENT



It helps institutions efficiently manage student tasks, practice work, submissions and teacher evaluations in a fully digital environment. It improves learning continuity, accountability and academic performance tracking.



# PREMIUM

## PAYMENT GATEWAY



This is a complete financial transaction system that enables institutions to collect fees digitally in a secure, automated and transparent manner. It eliminates manual cash handling and provides real-time tracking of all payments from students and parents.

## AUTOMATED ABSENCE ALERTS



The moment a student is marked absent during the morning attendance process, the system automatically triggers a real-time notification to the parent or guardian through SMS, WhatsApp, mobile app push notifications, or email.

## TIME TABLE & DIGITAL DIARY



This Module serves as a smart replacement for the traditional physical school diary, enabling seamless communication between teachers, students and parents. Through this module, institutions can efficiently manage daily schedules, homework assignments, announcements.

## WHATSAPP INTEGRATION



This Module enables institutions to communicate instantly with students, parents, teachers and staff through WhatsApp directly from the LMS platform. It automates notifications, reminders and important updates, ensuring higher engagement and faster communication.

## QUESTION BANK & AUTO-QUIZ



A centralized Question Bank and Automated Test Paper Generation module simplifies this process by allowing educators to build and manage a structured repository of questions categorized by subject, chapter, topic, difficulty level, learning outcome, marks and question type.

## CERTIFICATE GENERATION



Celebrate your achievements with personalized certificates generated instantly on our platform. Recognize your hard work and accomplishments in our educational app with beautifully crafted certificates tailored just for you.



# ADVANCED

## BIOMETRIC



It ensures secure and accurate authentication without the need for passwords or manual entry. When integrated with attendance, it automatically records presence in real time. This helps institutions maintain reliable records and prevent proxy attendance.

## LESSON PLANNING & SYLLABUS TRACKER



A dedicated and collaborative workspace for coordinators and teachers to create, manage and monitor weekly lesson plans aligned with the academic calendar and curriculum requirements. Teachers can plan topics, learning objectives, activities, assignments and assessments in advance.

## LIBRARY MANAGEMENT



It helps institutions digitally organize, track and manage books, journals, digital resources and library activities. It replaces manual library systems with an automated platform that improves accessibility, efficiency and resource utilization.

## ID CARD GENERATION



This enables educational institutions to create, manage and print professional student, staff and faculty ID cards directly from employee database. The system automatically fetches information such as name, photograph, admission number, class, section, contact details and other relevant information.

## STORE MANAGEMENT



Efficiently manage and track all inventory items, including books, stationery, uniforms, laboratory materials, sports equipment and other school supplies. The system maintains real-time stock records, automatically updates inventory whenever items are issued or received.

## VEHICLE MANAGEMENT



This module is designed to monitor and manage school/college transportation in real time. It ensures student safety, route efficiency and transparent communication between institution, drivers, parents and administrators.



# PROFESSIONAL



## TRANSFER CERTIFICATE (TC) & CERTIFICATE AUTOMATION



Automated generation of Transfer Certificates, Conduct Certificates, and Bonafide Certificates directly from the student profile to speed up mid-term departures or graduations.

## STUDENT LOCATION TRACKING



This helps schools to monitor and manage student safety, attendance verification and real-time movement tracking. Designed for school transportation, campus activities, educational tours and field trips, the system provides instant visibility into student whereabouts while ensuring enhanced security

## HOUSE & EXTRA CURRICULAR ACTIVITIES



Schools divide students into "Houses" (e.g., Red, Blue, Green) for sports, arts and cultural events. A module to track house points, youth festival schedules and extracurricular achievements fits perfectly

## CANTEEN & HOSTEL MANAGEMENT



This system enables schools to efficiently manage student accommodations and cafeteria operations through a centralized digital platform. The solution streamlines hostel administration by handling room allocations, occupancy tracking, hostel fee collection, attendance monitoring and visitor management.

## MULTI-CHILD PARENT ACCOUNT



This enables parents with multiple children studying in the same institution to access all their children's academic and administrative information through a single login. Instead of maintaining separate credentials for each child, parents can conveniently switch between child profiles.

## ADVANCED CUSTOM DEVELOPMENT



New modules, workflows, dashboards & automation processes based on client requirements. Whether it is a unique examination process, advanced reporting system, AI-powered learning assistant, stipend management, wallet system, project evaluation or specialized training modules.



# ENTERPRISE



## CRM SOLUTION



We can provide CRM solutions that will help manage all your company's relationships with both current and potential customers. By using our software, you'll be able to keep track of customer interactions, sales and more in one easy-to-use system.

## AI INTEGRATION



Our platform offers the flexibility to integrate AI tools as per your specific requirements, enhancing functionality and automation as needed. By accommodating custom AI integrations, we empower users to tailor their experience to suit their unique needs and preferences.

## HR & PAYROLL



The HR & Payroll Module in an LMS or ERP system helps institutions manage employee lifecycle, attendance, salary processing and compliance in a fully automated and organized digital system. It reduces manual HR workload and ensures accuracy, transparency and efficiency in staff management.

## ERP SOLUTIONS



The ERP system provides a unified platform where all organizational operations can be managed from a single dashboard. From Human Resources and Finance to Academics, Sales, Procurement, Inventory, Payroll and Compliance, every department operates within an integrated ecosystem.

## VR / AR SOLUTIONS



The VR (Virtual Reality) & AR (Augmented Reality) Solutions brings immersive and interactive learning experiences into education. It transforms traditional teaching into a 3D, experiential and simulation-based learning environment, helping students understand concepts more effectively.

## CUSTOM API INTEGRATION



The LMS supports custom API development and integration, allowing organizations to connect with any third-party software, government portals, enterprise applications, ERP systems, HRMS platforms, CRM solutions, payment providers, or industry-specific tools based on their operational requirements.

Celebrating **10**  
Years



**CALICUT**

Govt. Cyber Park, Calicut

+91 9526 859 323

www.witsclass.com

**COCHIN**

Kinfra Hi-Tech Park, Cochin

+91 9961 859 323

sales@witsclass.com

FOLLOW US ON    